

**SERVICE BULLETIN:** # SB-065

**DATE:** 04 October 2017

**TO:** ALL CH7 -CH77

**AFFECTED PRODUCTS:** CH77 Ranabot , CH7 KOMPRESS CHARLIE 2 Hi , CH7 Kompress Charlie , CH77

**PRODUCTS / SERIALS:** ALL

**SUBJECT:** BATTERY AND FRAME GROUND CABLES

**INSPECTION:** MANDATORY

**REPLACEMENT:** FIRST PRE-FLIGHT CHECK

---

## **COMPLIANCE PROCEDURE:**

### 1)Planning Information

#### 1.1 Reason:

Field experience has shown the need to upgrade the battery and engine negative cable connections to the chassis.

#### 1.2 Subject:

Battery and Engine GND cable connections to the Frame .

#### 1.3 Compliance

Request application in the next pre-flight inspection.

The replace must be in accordance with the installation instructions that follow in section 3.

**WARNING:** Do not apply this instruction can give the result of damage to 'aircraft, personal injury or death

### 2) Material-cost and availability

prices and availability will be provided by CH7 Helisport HELICOPTER, Authorized Sellers or CH7 SERVICE CENTER

#### 2.1 The Company

Shipping costs, downtime, loss of income, telephone costs etc., labor, additional work, are not covered

---

or reimbursed by CH7 Helisport HELICOPTER.

## 2.2 Material

required parts:

qty. 2 AN4-6

qty.2 MS210083-N4

qty. 4 AN960-416L

qty. 2 cavo di massa 16 mm lunghezza 350 mm

qty. 1 cavo di massa 16 mm lunghezza 230 mm

qty.1 M6x12

2.4 special equipment / Grease / Glue / sealing compound.

NO

Rework of parts

NO

### 3) Instructions

before maintenance review for full documentation to understand exactly the procedures and requirements to avoid errors,

They must be taken and confirmed all the measures by the following persons or facilities:

CH7 Helisport HELICOPTER

CH7 SERVICE CENTER

People approved by CH7 Helisport HELICOPTER

### 3.1 instruction

see TAV. (1)

WARNING apply points 1 -2-3-4 only for CH77 models

1) Disconnect from the Battery the Main Wiring Negative BATT GND Cable and Cable BATTERY FRAME

2) create a 6.4 mm hole in the support as shown in figure (A)

3) Insert the AN9-6-416L washer bolt AN4-6 then the 2-pin 16mm x350mm cable terminals and BATT GND secure the 3-wire cables in side to the frame with nut MS210083-N4 figures (C),

WARNING (copper clamps must be slightly bent to allow them to be grouped together.) figure (AA)

4) Connect the two 16 mm cables to the battery figures (E EE)

5) Remove the M6 &#8203;&#8203;nut that secures the ground cable from the engine to the 250mm length cell and remove any anodizing from the MGB oil pump holder with abrasive paper as figures (F FF)

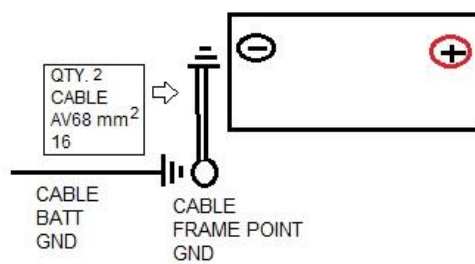
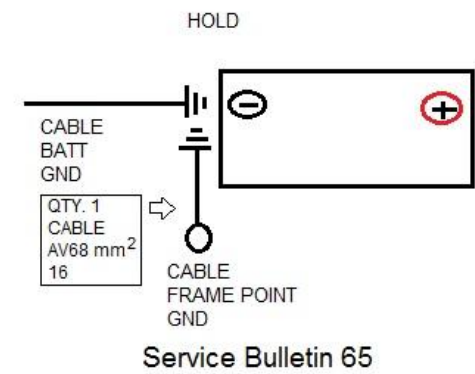
6) disconnect AN-4 the ground cable from the frame 250mm length and REGUL.GND cable, if it is not already done, remove all paint from the surface with abrasive paper as figure (G)

7) Insert in the AN4-6 washer AN960-416L bolt and then the 250mm cable and add the 16mm and ..REGUL.GND additional cable. fix the 3 cables to the cell with nut MS210083-N4 figure (H)

8) Fix the two 16mmx 250 cables to the motor with 2 nuts M6x16

WARNING (copper clamps must be slightly bent to allow them to be grouped together.)

---



TAV. 1

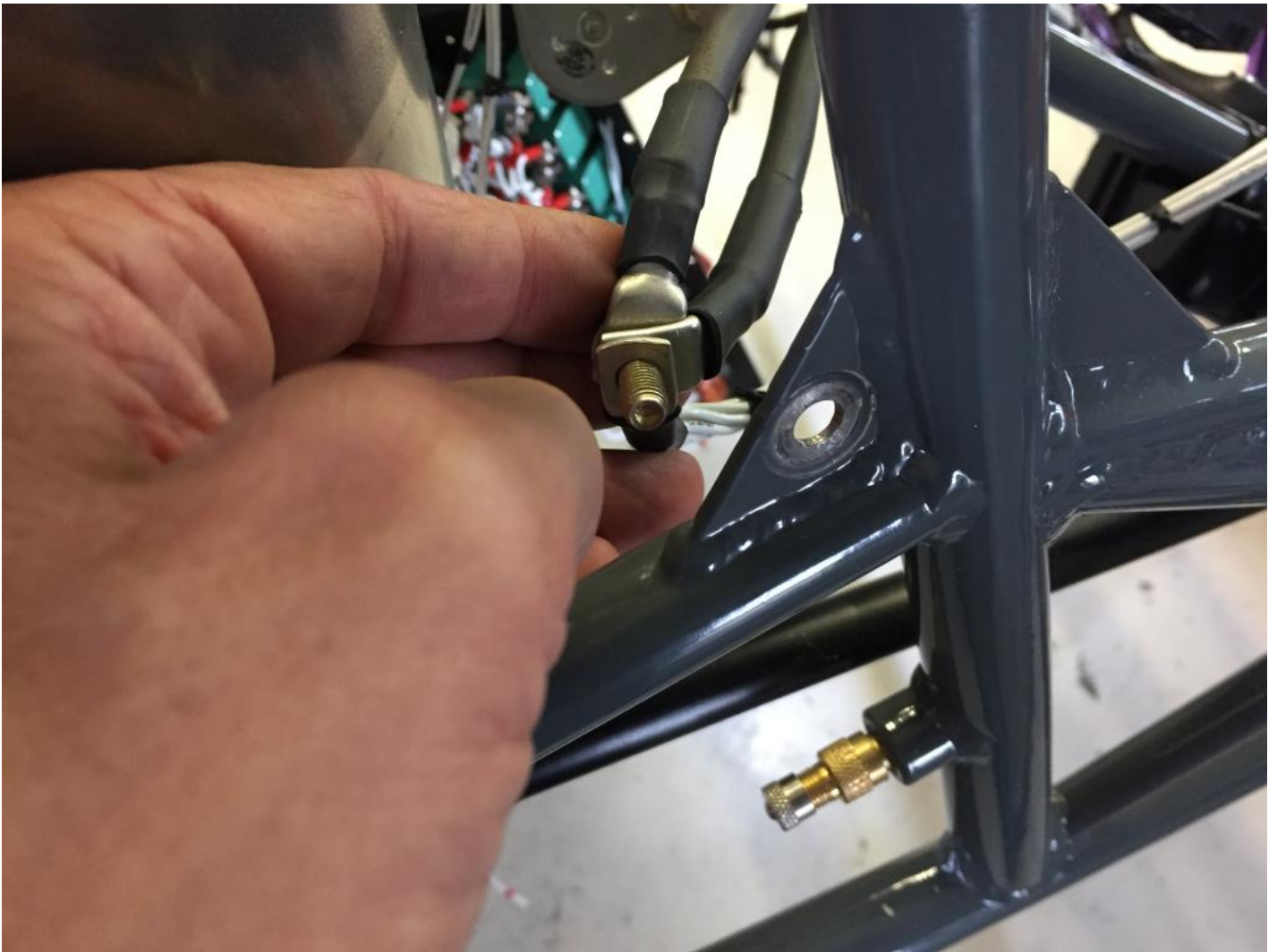


FIGURE A



FIGURE C



FIGURE AA



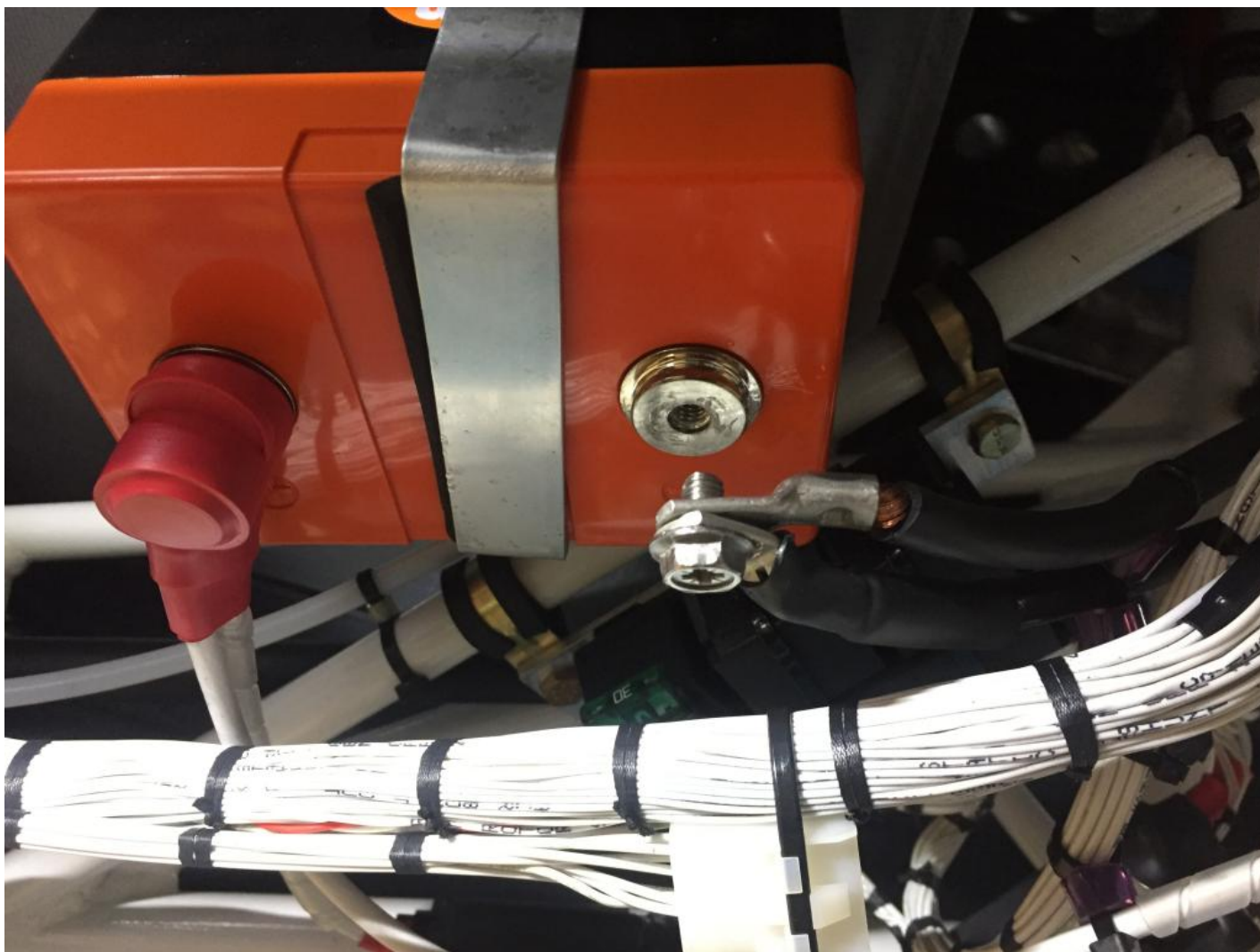
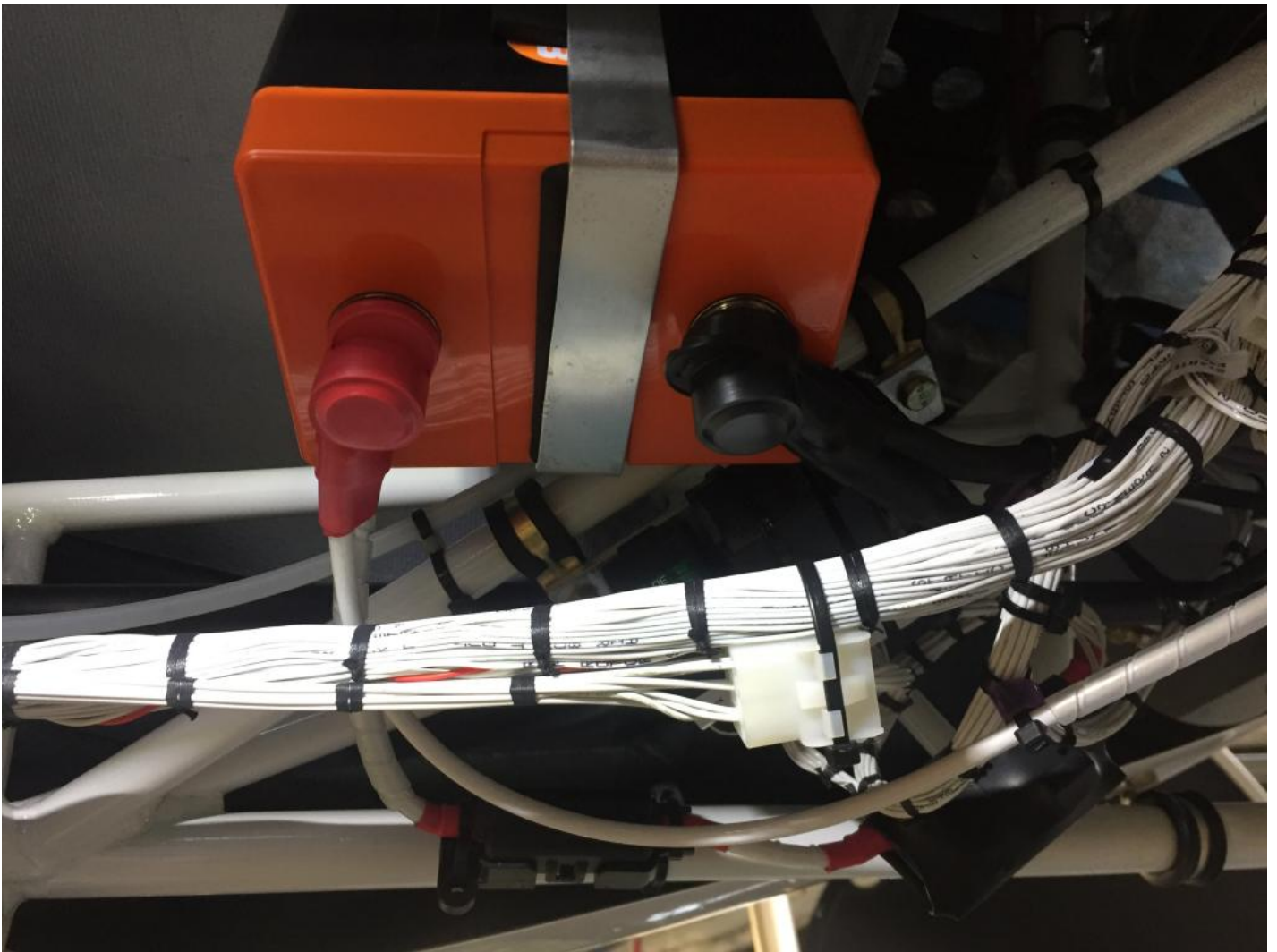


FIGURE E

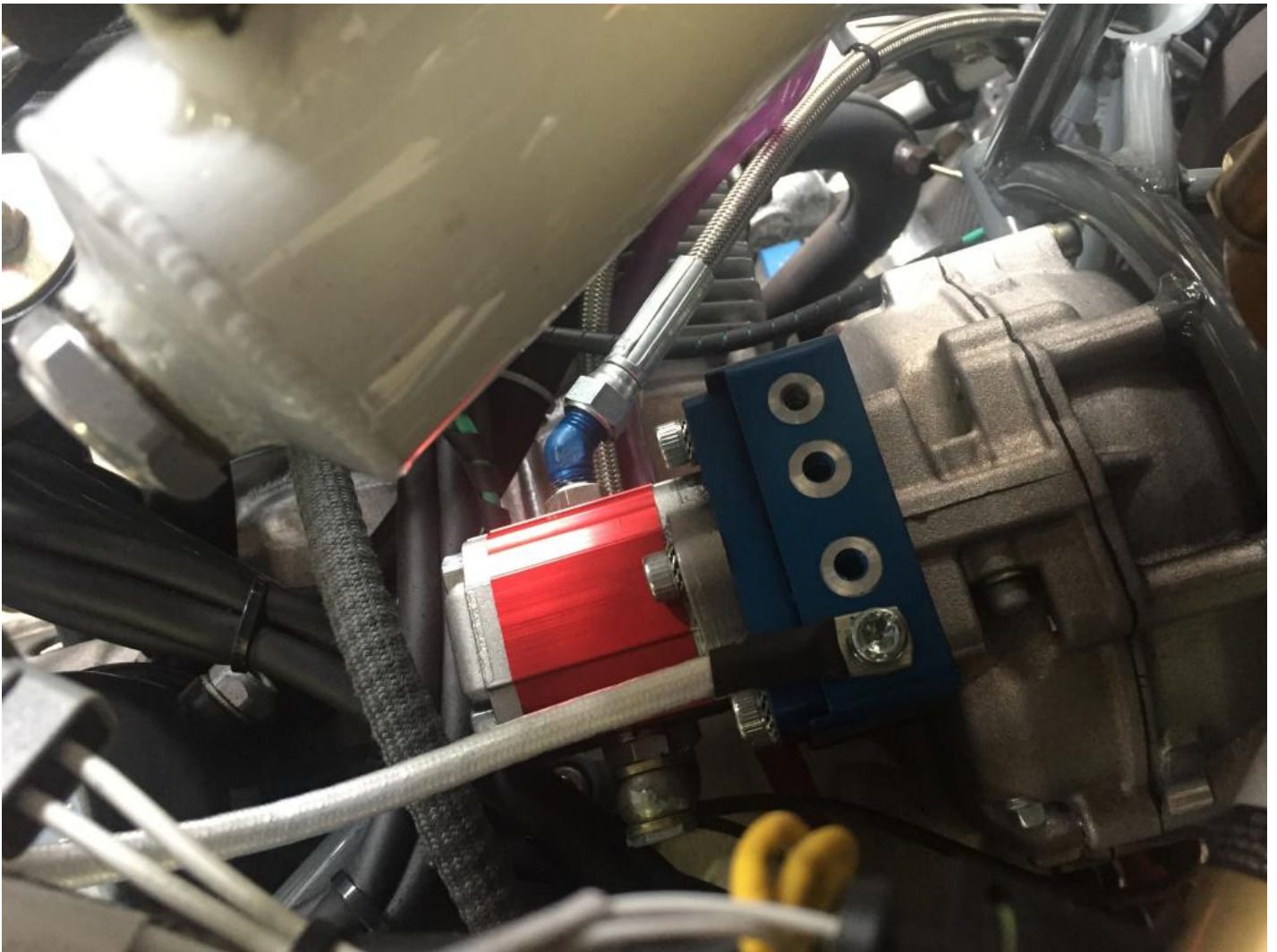


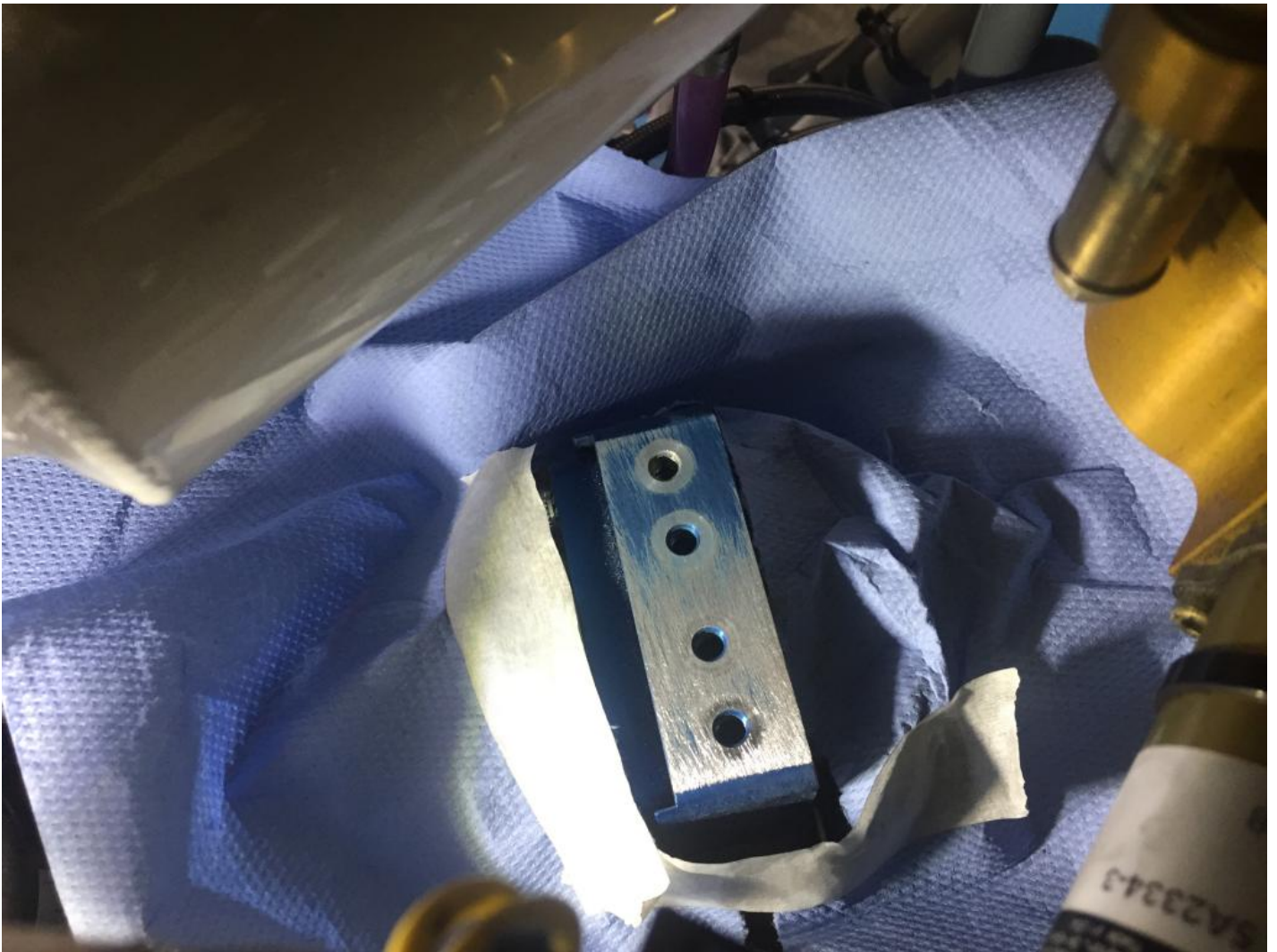
FIGURES EE





FIGURE G





FIGURES FF



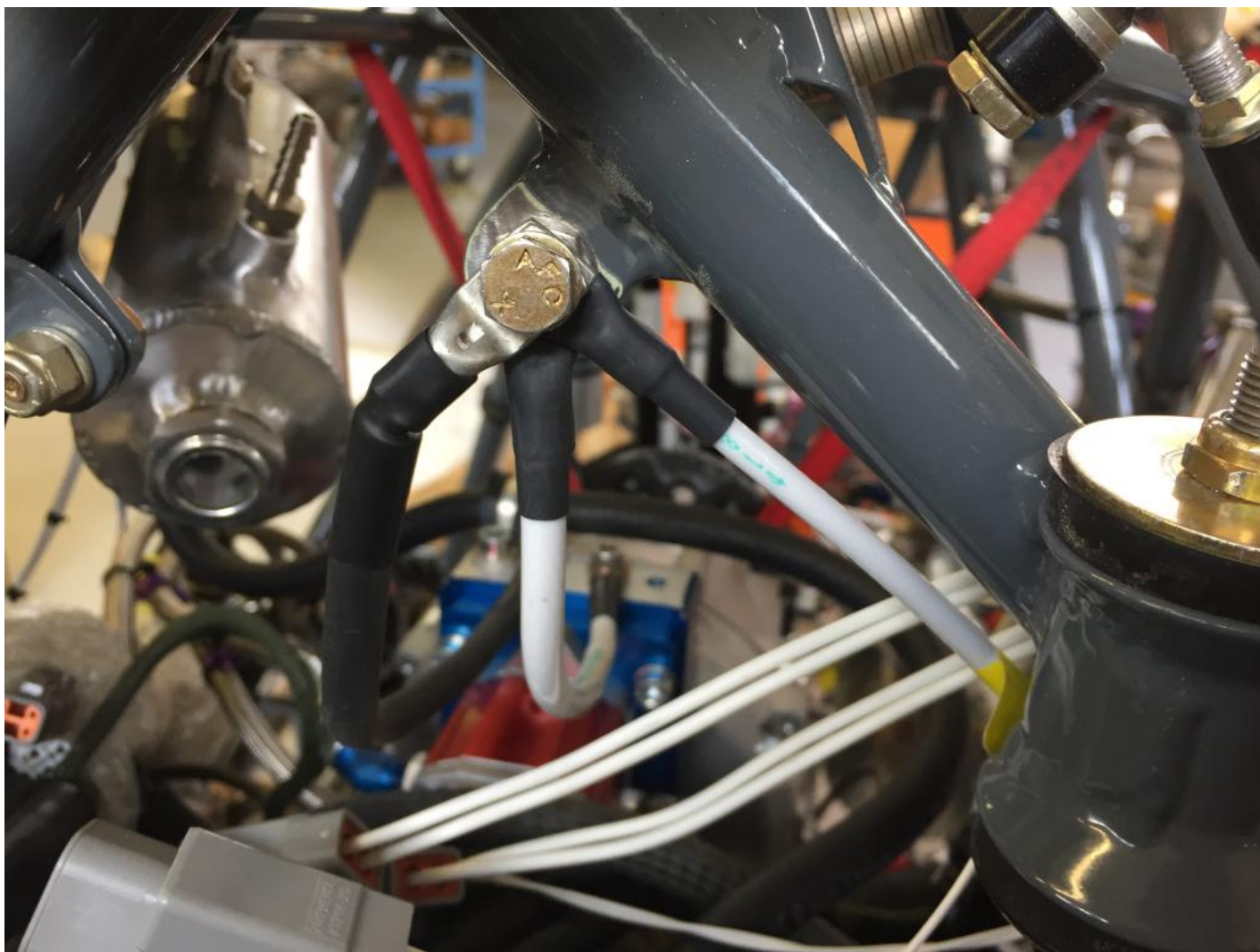


FIGURE H